

Directive 87/404/EEC**Directive references:** Annexe I**Adopted by WPG:** November 1994**Adopted by CLAP:** November 1994**Subject:** Point 2 - Drainage openings for air braking vessels**Question:**

Essential requirement point 2 of Annex 1 of Directive 87/404/EEC states that it must be possible to drain vessels.
Is it acceptable that the drainage of the vessels can be realized by the means of a dip tube?

Answer:

The following could be considered as satisfying this part of the essential requirement:
- vessels which have the drainage openings situated in the lowest points;
- vessels which have the drainage openings not placed in the lowest points but which are equipped with a dip tube capable of effectively draining the vessel (see diagrams).

Reasons

The presence of a dip tube from which the end is situated in the lowest point of the vessel permits a satisfactory evacuation of the condensate.

If the drainage opening cannot be made in the bottom of the vessel, drainage may nevertheless be provided by one of the methods shown in figures 1 to 4.

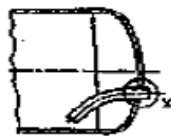


Abb. 1: an einem Ende befestigtes Eintauchrohr

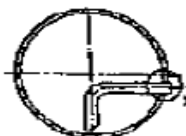


Abb. 2: am Gehäuse eines horizontalen Behälters befestigtes Eintauchrohr



Abb. 3: am Gehäuse eines vertikalen Behälters angebrachtes Eintauchrohr

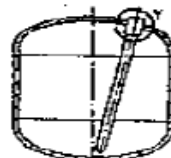


Abb. 4: an der Oberseite eines vertikalen Behälters angebrachtes Eintauchrohr