

Directive 2014/68/EU

Adopted by WGP : 15/03/2016

Adopted by CLAP : 15/03/2016

Directive References: Article 1 § 2 (f)

Article 1 § 2 (j)

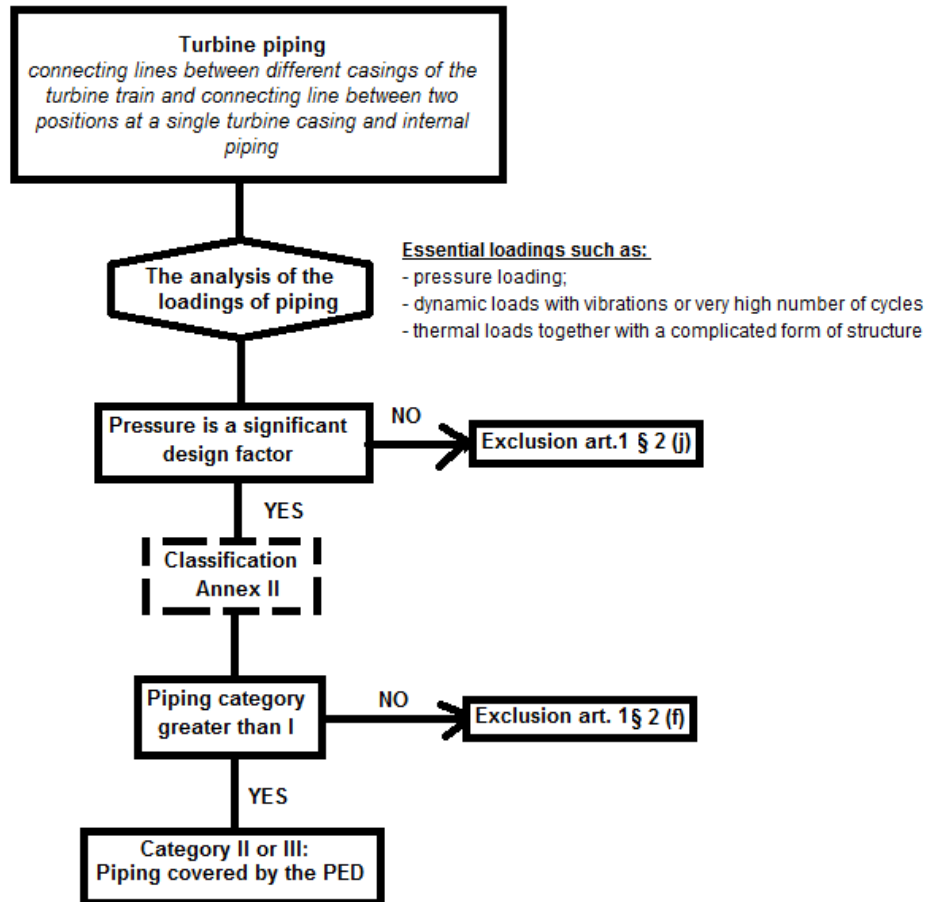
Article 2 (3)

Subject: Scope – Turbine piping

Question: Is turbine piping covered by the Pressure Equipment Directive (PED)?

Answer:

Turbine piping defined as “connecting lines between different casings of the turbine train and connecting line between two positions at a single turbine casing and internal piping” is evaluated as follows: ^{1/2}



Guideline

A-55

CLAP

FORM N°X056

Version : 1

Directive 2014/68/EU

Adopted by WGP : 15/03/2016

Adopted by CLAP : 15/03/2016

Directive References: Article 1 § 2 (f)

Article 1 § 2 (j)

Article 2 (3)

Subject: Scope – Turbine piping

Question: Is turbine piping covered by the Pressure Equipment Directive (PED)?

Answer:

2/2

Note 1: The manufacturer has the ultimate responsibility to perform a hazard analysis and to determine the Directives applicable to the equipment.

Note 2: Inlet and outlet piping is not part of the turbine, so it shall be evaluated separately against PED.

Note 3: See also Guideline A-11 (CLAP X017), Guideline A-26 (CLAP X030) and Guideline H-04.

2019-12-31